

Distribution Unit with 1 IEC Appliance Inlet C14 or Power Cord, 4, 5 or 6 IEC Appliance Outlets F and Extra Components



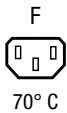
with EU power supply cord



with appliance inlet



with IEC power supply cord



See below:

**Approvals and Compliances**

**Description**

- Stand alone module
- 2 - 5 Functions :  
Appliance Inlet Protection class I , Connector shuttered
- Line Switch
- Fuseholder with fuse and neon indicator
- Version with line filter 6A

**Weblinks**

[pdf data sheet](#), [html datasheet](#), [General Product Information](#), [Approvals](#), [Distributor-Stock-Check](#), [Accessories](#), [Detailed request for product](#)

**Technical Data**

Ratings IEC	10A / 250VAC; 50Hz	Appliance inlet/-outlet	C14 acc. to IEC 60320-3, / F acc. to IEC 60320-3
Ratings UL/CSA	15A / 250VAC; 60Hz		
Dielectric Strength	> 2.5kVAC between L-N		UL 60320-1 CSA C22.2 no. 60320-1 (for cold conditions) pin-temperature 70 °C, 10A, Protection Class I
	> 2.5kVAC between L/N-PE (1 min/50Hz)		
Allowable Operation Temperature	-25 °C to 70 °C	Fuseholder	1-pole, acc. to IEC 60127-6, for fuse-links 5 x 20mm
Protection against electric shock	Suitable for appliances with protection class I acc. to IEC 61140	Power Acceptance @ Ta > 23°C	Admissible power acceptance at higher ambient temperature see derating curves
Material: Housing	Thermoplastic, black, UL 94V-0	Line Switch	Rocker switch, illuminated, acc. to <a href="#">Technical Details</a>

**Approvals and Compliances**

Detailed information on product approvals, code requirements, usage instructions and detailed test conditions can be looked up in [Details about Approvals](#)

SCHURTER products are designed for use in industrial environments. They have approvals from independent testing bodies according to national and international standards. Products with specific characteristics and requirements such as required in the automotive sector according to IATF 16949, medical technology according to ISO 13485 or in the aerospace industry can be offered exclusively with customer-specific, individual agreements by SCHURTER.


**Product standards**

Product standards that are referenced

Organization	Design	Standard	Description
	Designed according to	IEC 60320-3	Appliance couplers for household and similar general purposes
	Designed according to	IEC 60320-3	Appliance couplers for household and similar general purposes
	Designed according to	IEC 60127-6	Miniature fuses. Part 6. Fuse-holders for miniature fuse-links
	Designed according to	UL 60320-1	Standard for Attachment Plugs and Receptacles
	Designed according to	CSA C22.2 no. 60320-1	General Use Receptacles, Attachment Plugs, and Similar Wiring Devices






**Application standards**

Application standards where the product can be used

Organization	Design	Standard	Description
	Suitable for applications acc.	IEC/UL 62368-1	Audio/video, information and communication technology equipment - Part 1: Safety requirements

**Compliances**

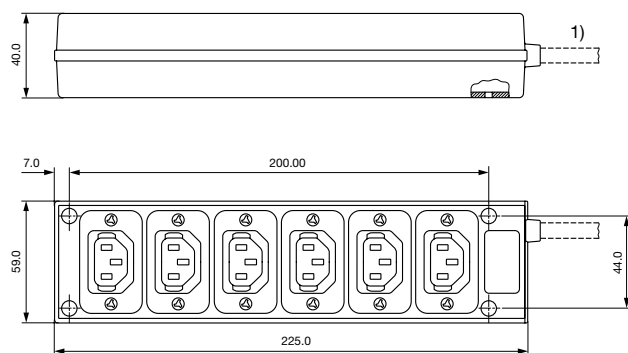
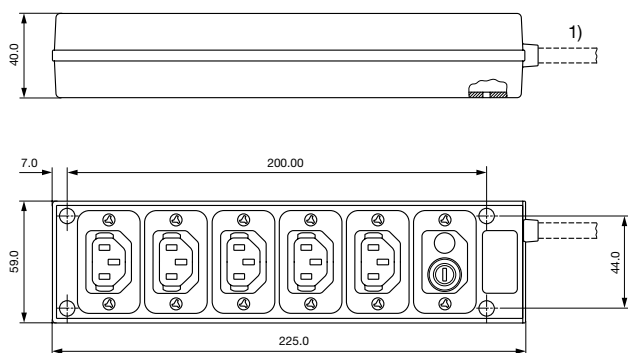
The product complies with following Guide Lines

Identification	Details	Initiator	Description
	<a href="#">CE declaration of conformity</a>	SCHURTER AG	The CE marking declares that the product complies with the applicable requirements laid down in the harmonisation of Community legislation on its affixing in accordance with EU Regulation 765/2008.
	<a href="#">UKCA declaration of conformity</a>	SCHURTER AG	The UKCA marking declares that the product complies with the applicable requirements laid down in the British Amendment of Regulation (EC) 765/2008.
	RoHS	SCHURTER AG	Directive RoHS 2011/65/EU, Amendment (EU) 2015/863
	China RoHS	SCHURTER AG	The law SJ / T 11363-2006 (China RoHS) has been in force since 1 March 2007. It is similar to the EU directive RoHS.
	REACH	SCHURTER AG	On 1 June 2007, Regulation (EC) No 1907/2006 on the Registration, Evaluation, Authorization and Restriction of Chemicals 1 (abbreviated as "REACH") entered into force.

**Dimensions [mm]**

Stripbloc 4740.3X00

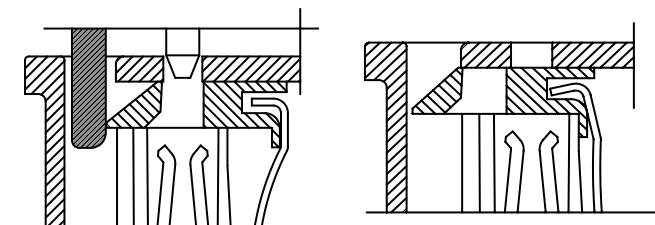
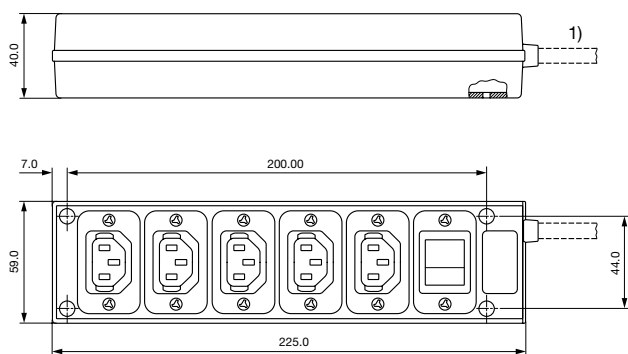
Stripbloc 4740.4X00



1) Version with plug and cable, see variants  
 Mounting holes for 3 mm screws

1) Version with plug and cable, see variants  
 Mounting holes for 3 mm screws

Stripbloc 4740.6X00



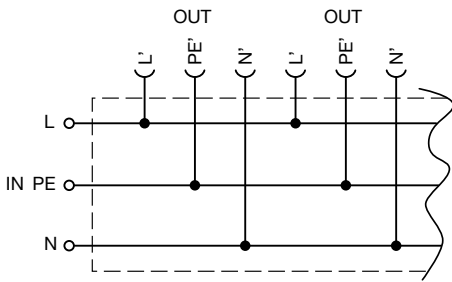
Shutter operation:  
 shutters opened by plug insertion

Shutter operation:  
 shutters closed when plug is removed

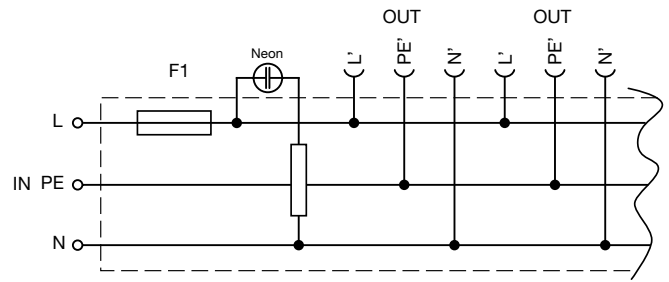
1) Version with plug and cable, see variants  
 Mounting holes for 3 mm screws

Diagrams

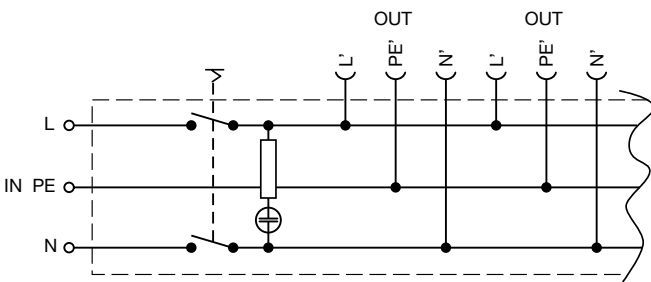
Distribution unit with 6 outlets



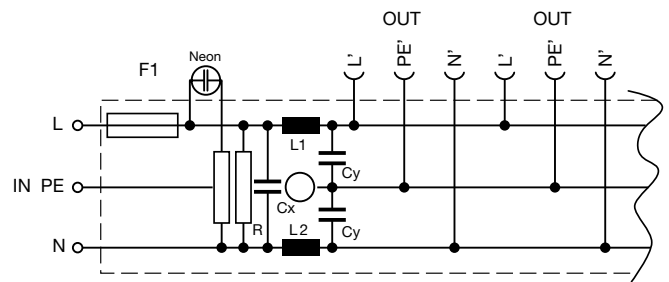
Distribution unit with 5 outlets, fuseholder and neon indication



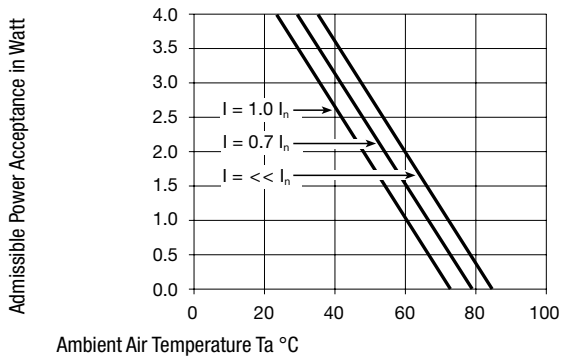
Distribution unit with 5 outlets and rocker switch illuminated



Distribution unit with 5 outlets, fuseholder, neon indication and filter



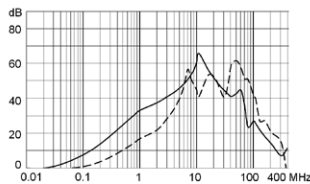
Derating Curves



Attenuation loss

Standard version

--- 50Ω differential mode    \_\_\_\_ 50Ω common mode



## Variants

Connector	Fuseholder	Line Switch	Neon indication	Terminal	Cable	Order Number
6	-	-	-	-	inlet	4740.4000
6	-	-	-	Continental Europe CEE7/II (Schuko), 10A	2 m cable	4740.4600
6	-	-	-	United Kingdom BS 1363 A, 10A	2 m cable	4740.4300
5	-	2-pole	-	-	inlet	4740.6000
5	-	2-pole	-	Continental Europe CEE7/II (Schuko), 10A	2 m cable	4740.6600
5	-	2-pole	-	United Kingdom BS 1363 A, 10A	2 m cable	4740.6300
5	1-pole	-	●	-	inlet	4740.3000
5	1-pole	-	●	Continental Europe CEE7/II (Schuko), 10A	2 m cable	4740.3600
5	1-pole	-	●	IEC/EN 60320-1/E, 10A	2 m cable	4740.3800
5	1-pole	-	●	United Kingdom BS 1363 A, 10A	2 m cable	4740.3300
5	1-pole	-	●	with line filter 6 A	inlet	4740.3100
4	1-pole	2-pole	●	-	inlet	4740.7000

Availability for all products can be searched real-time: <https://www.schurter.com/en/info-center/support-tools/stock-check-distributors>

- 4740.3100 is with line filter 6A

- Inserted fuse: SP 5 x 20; 10 A / 250VAC, quick acting F, part No. 0001.1014

- Inserted fuse for filter type: SP 5 x 20; 6.3 A / 250VAC, quick acting F, part No. 0001.1012

- Main plug cable acc. country specific standards

## Packaging unit

10 Pcs

## Mating Inlets/Plugs

## Category / Description

[Plug Overview complete](#)

4732, Mounting: Power Cord, Plug: IEC E, Cable	4732
4735, Mounting: Power Cord, Plug: IEC E, Cable	4735
9009, Mounting: Plug: IEC E, Screw clamps	9009
4733, Mounting: Power Cord, Plug: IEC E, Cable	4733
4736, Mounting: Power Cord, Plug: IEC E, Cable	4736

...

## Mating Outlets/Connectors

[Appliance Outlet Overview complete](#)

4787, Mounting: Screw-on mounting, Appliance Outlet: IEC Solder terminals, 10 A, Suitable for appliances with protection class I	4787
IEC Appliance Outlet F or H, Screw-on Mounting, Front Side, Solder, PCB or Quick-connect Terminal	5091

[Connector Overview complete](#)

4782 Mounting: Power Cord, 3 x 1 mm <sup>2</sup> / 3 x 18 AWG, Cable, Connector: IEC C13	4782
4785 Mounting: Power Cord, 3 x 1 mm <sup>2</sup> / 3 x 18 AWG, Cable, Connector: IEC C13	4785
4300-06 Mounting: Power Cord, 3 x 1 mm <sup>2</sup> / 3 x 18 AWG, Cable, Connector: IEC C13	4300-06

Interconnection Cord Overview complete



Cord Sets 10 A, Interconnection, 2.0 m, IEC H05VV-F3G1.0, black	6007.0204
Cord Sets 10 A, Interconnection, 1.0 m, Connector IEC C13, H05VV-F3G1.0, black	6007.0212
Cord Sets 10 A, Interconnection, 2.0 m, Connector IEC C13, H05VV-F3G1.0, black	6007.0214

Power Supply Cord Overview complete



Cord Sets 10 A, Europlug, 2.5 m, Connector IEC C13, H05VV-F3G1.0, black	6004.0215
Cord Sets 10 A, Europlug, 2.5 m, Connector IEC C13, H05VV-F3G1.0, black	6003.0215
Cord Sets 10 A, uninsulated wires, 2.0 m, Connector IEC C13, H05VV-F3G1.0, black	6000.0224
Cord Sets 10 A, uninsulated wires, 2.0 m, Connector IEC C13, H05VV-F3G1.0, black	6000.0214
Cord Sets 10 A, United Kingdom, 2.5 m, Connector IEC C13, H05VV-F3G1.0, black	6044.0215

...

Power Supply or Interconnection Cord Overview complete



Cord Sets 10 A, United Kingdom, 2.0 m, Connector IEC H05VV-F3G1.0, black	6044.0204
--	-----------