

IEC Appliance Inlet C20, Snap-in Mounting, Front Side, Solder or Quick-connect Terminal



C20



70° C

**Description**

- Panel Mount:
Snap-in, from front side
- Appliance Inlet, Pin temperature 70 °C, Protection class I
- Solder terminals or quick connect terminals
- Alternative: protection class II version 4794

Approvals

- VDE Certificate Number: 40030341
- UL File Number: E96454

Other versions on request

- Types for enhanced glow wire test requirements acc. IEC 60695-2-11 to -13 for the use in unattended household equipment acc. IEC 60335-1

References

[General Product Information](#)

Weblinks

[Approvals, RoHS, CHINA-RoHS, Mating Connectors, Distributor-Stock-Check, Accessories](#)

Technical Data

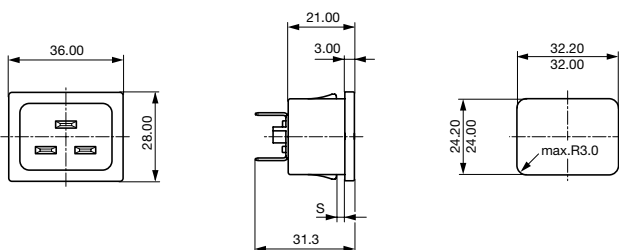
| | |
|---------------------------|---|
| Ratings IEC | 16A / 250VAC; 50Hz |
| Ratings UL/CSA | 20A / 250VAC; 60Hz |
| Dielectric Strength | > 2kVAC between L-N > 2kVAC between L/N-PE (1 min/50Hz) |
| Allowable Operation Temp. | -25 °C to 70 °C |
| Degree of Protection | from front side IP 30 acc. to IEC 60529 |
| Protection Class | Suitable for appliances with protection class 1 acc. to IEC 61140 |
| Terminal | Solder terminals or quick connect terminals |
| Panel Thickness s | Snap-in: 1/1.2/1.5/2/2.5/3 mm |
| Material: Housing | Thermoplastic, black, UL 94V-0 |

| | |
|-----------------|--|
| Appliance Inlet | C20 acc. to IEC/EN 60320-1, UL 498, CSA C22.2 no. 42 (for cold conditions) pin-temperature 70 °C, 16A, Protection Class 1 |
|-----------------|--|

Dimensions

4793

36 mm



Variants

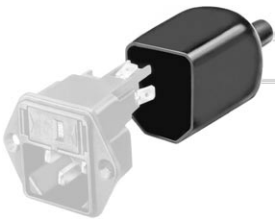
| Panel mounting | Panel Thickness s [mm] | Terminal | Order Number |
|----------------|------------------------|--------------------------------------|--------------|
| Snap-in | 1 | Quick connect terminals 6.3 x 0.8 mm | 4793.3000 |
| Snap-in | 1.2 | Quick connect terminals 6.3 x 0.8 mm | 4793.8000 |
| Snap-in | 1.5 | Quick connect terminals 6.3 x 0.8 mm | 4793.4000 |
| Snap-in | 2 | Quick connect terminals 6.3 x 0.8 mm | 4793.5000 |
| Snap-in | 2.5 | Quick connect terminals 6.3 x 0.8 mm | 4793.6000 |
| Snap-in | 3 | Quick connect terminals 6.3 x 0.8 mm | 4793.7000 |
| Snap-in | 1 | Solder terminals 3.8 x 0.8 mm | 4793.3200 |
| Snap-in | 1.2 | Solder terminals 3.8 x 0.8 mm | 4793.8200 |
| Snap-in | 1.5 | Solder terminals 3.8 x 0.8 mm | 4793.4200 |
| Snap-in | 2 | Solder terminals 3.8 x 0.8 mm | 4793.5200 |
| Snap-in | 2.5 | Solder terminals 3.8 x 0.8 mm | 4793.6200 |
| Snap-in | 3 | Solder terminals 3.8 x 0.8 mm | 4793.7200 |

Articles for enhanced glow wire test requirements acc. IEC 60695-2-11 to -13 can be ordered with ending ".15" (xxxx.xxxx.15). They are suitable for the use in unattended household equipment acc. IEC 60335-1.

Packaging unit 100 Pcs

Accessories

Description



Assorted Covers
Rear Cover

0859.0047



Cord retaining kits
Cord retaining strain relief

Flat head, L

4700.0011

Mating Outlets/Connectors

Category / Description

Connector Overview complete



IEC Connector C19, Rewireable, Straight

0104

IEC Connector C19, Rewireable, Angled

1651

IEC Connector C19, Rewireable, Straight

1652

IEC Connector C19, Rewireable, Angled

4790

IEC Connector C19, Rewireable, Straight

4795

[Connector further types to 4793](#)

Power Cord Overview complete



Power Cord with IEC Connector C19, Straight

1654

[Power Cord further types to 4793](#)

Category / Description

[Power Supply or Interconnection Cord Overview complete](#)

[Divers Power Supply and Interconnection Cords 16 A](#)

[Kabelverbindung/16 A](#)

[Power Supply or Interconnection Cord further types to 4793](#)
