

IEC Appliance Inlet C22 for hot Conditions, with Filter for high Temperatures, front side Mounting

Standard- or Medical-Filter



new



C22

 155° C



Description

- Panel Mount :
Screw-on from front side
- 2 Functions :
Appliance Inlet Protection class I , Line filter in standard and medical version
- Solder, quick connect or wires (stranded)

Unique Selling Proposition

- For higher temperatures
- Attractive flat front design
- Highly resistant since fully potted
- Various filter variants

Approvals

- Approval Reference Type: C22F
- VDE Certificate Number: 104884
- UL File Number: E72928

Characteristics

- Compact design with optimal shielding
Suitable for high ambient temperatures up to 75°C
- Version with class X1 and X2 (standard version) capacitors
- Universal line filter for standard applications
- Suitable for use in equipment according to IEC/UL 60950
Suitable for use in medical equipment according to IEC/UL 60601-1

Other versions on request

- flexible wire with various lengths

References

Alternative: version without line filter [1681](#)

Weblinks

[pdf datasheet](#), [html-datasheet](#), [General Product Information](#), [Approvals](#), [CE declaration of conformity](#), [RoHS](#), [CHINA-RoHS](#), [REACH](#), [Distributor-Stock-Check](#), [Accessories](#), [Detailed request for product](#), [Microsite](#)

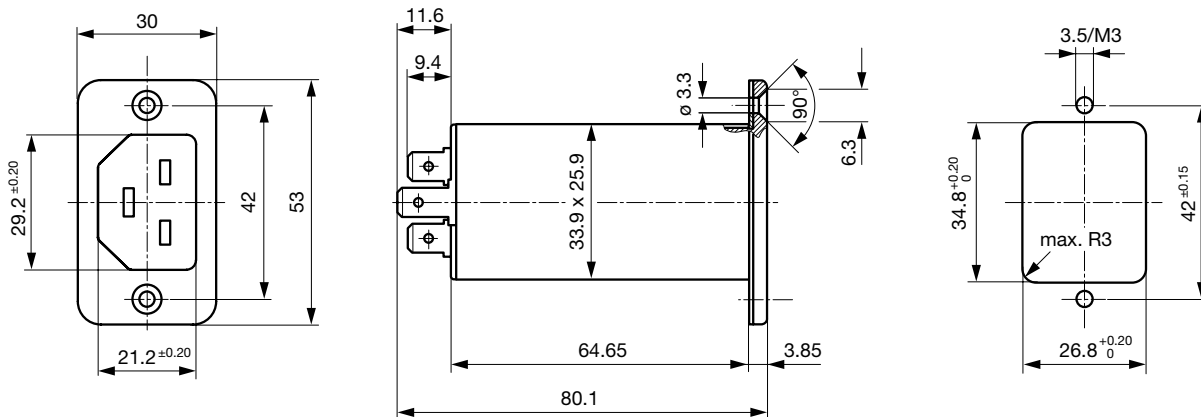
Technical Data

Ratings IEC	16A @ Ta 75 °C / 250VAC; 50Hz	appliance inlet/-outlet	C22 acc. to IEC 60320-1, UL 498, CSA C22.2 no. 42 (for hot conditions) pin-temperature 155 °C, 16A, Protection Class I
Ratings UL/CSA	20A @ Ta 65 °C / 250VAC; 60Hz	Line Filter	Standard and Medical Version, IEC 60939, UL 1283, CSA C22.2 no. 8 Technical Details
Leakage Current	standard < 0.5mA (250V / 60Hz) medical < 5 µA (250 V / 60 Hz)	MTBF	> 1'400'000h acc. to MIL-HB-217 F
Dielectric Strength	> 1.7kVDC between L-N (Cy2) > 2.7kVDC between L/N-PE (Cy2) Test voltage (2 sec)		
Impulse Withstand Voltage	> 2.5kV between L-N (CX2) > 4 kV between L-N (CX1) > 5kV between L/N-PE (Cy2) voltage (1.2/50 µs)		
Allowable Operation Temperature	-25 °C to 100 °C		
Climatic Category	25/100/21 acc. to IEC 60068-1		
IP-Protection	from front side IP 40 acc. to IEC 60529		
Protection Class	Suitable for appliances with protection class I acc. to IEC 61140		
Terminal	Solder, quick connect or wires (stranded)		
Panel Thickness S	Screw: max 8 mm Mounting screw torque max 0.5Nm		
Material: Housing	Thermoplastic, black, UL 94V-0		

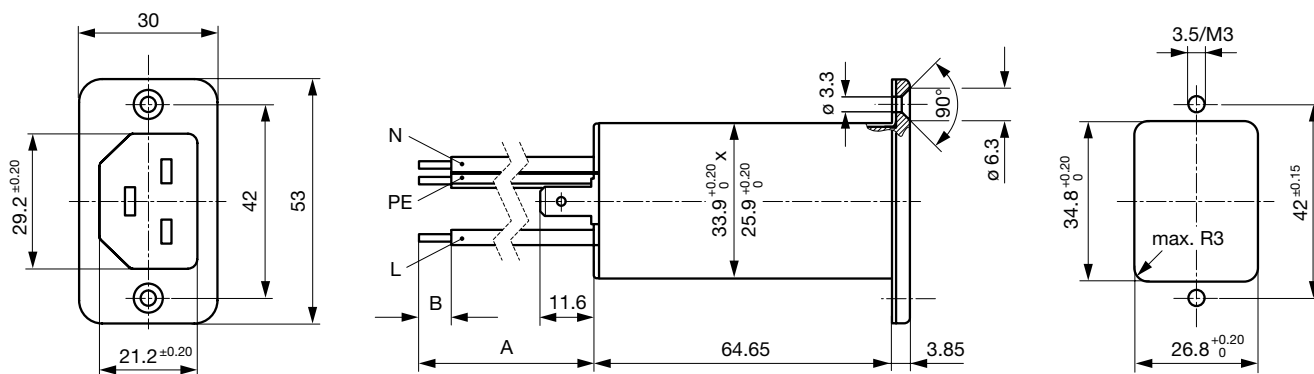
Detailed information on product approvals, code requirements, usage instructions and detailed test conditions can be looked up in [General Product Information](#)

Dimensions [mm]

Screw-on mounting with quick connect terminals



Screw-on mounting with wire leads



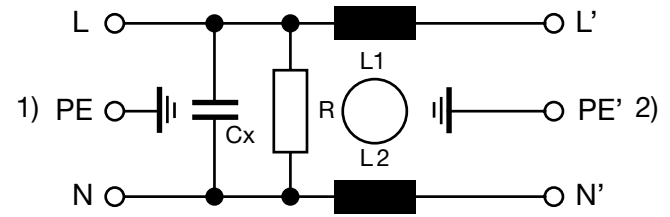
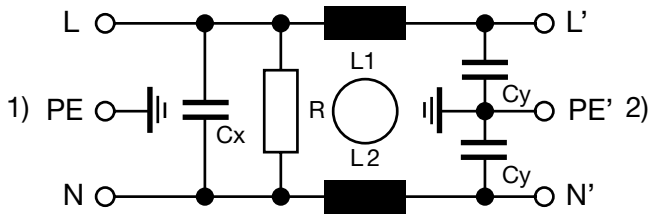
Technical Data of Filter-Components

Rated Current [A]	Filter-Type	Inductances L [mH]	Capacitance CX [nF]	Capacitance CY [nF]	R [MΩ]
16	Standard Version	2 x 0.6	100	2.2	1
16	Standard Version	2 x 0.6	330	2.2	1
20	Standard Version	2 x 0.3	100	2.2	1
20	Standard Version	2 x 0.3	330	2.2	1
16	Medical Version (M5)	2 x 0.6	100	-	1
20	Medical Version (M5)	2 x 0.3	100	-	1
20	Medical Version (M5)	2 x 0.3	330	-	1
16	Medical Version (M80)	2 x 0.6	100	0.47	1
20	Medical Version (M80)	2 x 0.3	100	0.47	1

Diagrams

Standard or medical version (M80)

Medical version (M5)



1) Line
2) Load

1) Line
2) Load

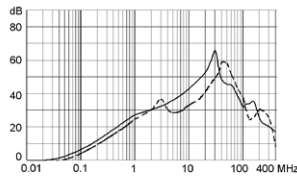
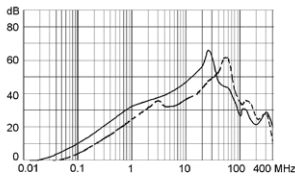
Attenuation Loss

----- 50Ω differential mode _____ 50Ω common mode

Standard version

16 A

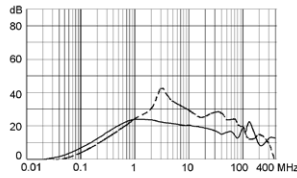
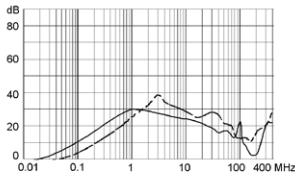
20 A



Medical version (M5)

16 A

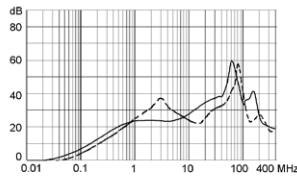
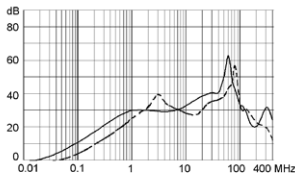
20 A



Medical version (M80)

16 A

20 A



All Variants

Rated Current IEC [A]	Rated Current UL [A]	Filter-Type	Panel mounting	Mounting side	Terminal	Capacitor	V-Lock	Order Number
16	16	Standard Version	Screw	Front Side	Quick connect terminals 6.3 x 0.8 mm	X2 330nF		C22F.1107
16	20	Standard Version	Screw	Front Side	Quick connect terminals 6.3 x 0.8 mm	X2 100nF		C22F.0101
16	16	Standard Version	Screw	Front Side	Quick connect terminals 6.3 x 0.8 mm	X2 100nF		C22F.1101
16	20	Standard Version	Screw	Front Side	Quick connect terminals 6.3 x 0.8 mm	X1 100nF		C22F.0103

Rated Current IEC [A]	Rated Current UL [A]	Filter-Type	Panel mounting	Mounting side	Terminal	Capacitor	V-Lock	Order Number
16	20	Standard Version	Screw	Front Side	Solder terminal	X2 330nF		C22F.0007
16	20	Standard Version	Screw	Front Side	Solder terminal	X2 100nF		C22F.0001
16	16	Standard Version	Screw	Front Side	Solder terminal	X2 100nF		C22F.1001
16	20	Standard Version	Screw	Front Side	Solder terminal	X1 100nF		C22F.0003
16	20	Medical Version (M5)	Screw	Front Side	Quick connect terminals 6.3 x 0.8 mm	X2 100nF		C22F.0102
16	16	Medical Version (M5)	Screw	Front Side	Quick connect terminals 6.3 x 0.8 mm	X2 100nF		C22F.1102
16	20	Medical Version (M5)	Screw	Front Side	Solder terminal	X2 330nF		C22F.0008
16	20	Medical Version (M5)	Screw	Front Side	Solder terminal	X2 100nF		C22F.0002
16	16	Medical Version (M5)	Screw	Front Side	Solder terminal	X2 100nF		C22F.1002
16	16	Medical Version (M80)	Screw	Front Side	Solder terminal	X2 100nF		C22F.1005

Availability for all products can be searched real-time: <https://www.schurter.com/en/Stock-Check/Stock-Check-SCHURTER>

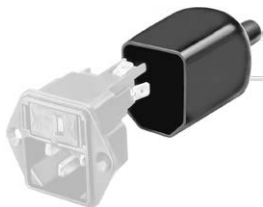
Packaging unit 20 Pcs

Accessories

Description



Wire Harness
 Wire harness for SCHURTER products



Assorted Covers
 Rear Cover

Mating Outlets/Connectors

Category / Description



[Connector Overview complete](#)

1658, Mounting: Power Cord, Cable Connector: IEC C21

1658.0000

[Connector further types to C22F](#)



Power Supply Cord Overview complete

Cord Sets 16 A, Europlug, 2.5 m, Connector IEC C21, H05VV-F3G1.5, black	6051.5001
Cord Sets 16 A, North America, 2.5 m, Connector IEC C21, SJT 3x14 AWG, black	6051.5002

[Power Supply Cord further types to C22F](#)