

Prismatic Supercapacitor



Case WS34

See below:

Approvals and Compliances

Description

- Prismatic ultra-thin supercapacitors
- Single or double cell version
- Ultra-compact design
- High pulse power

Unique Selling Proposition

- Excellent low temperature performance
- High power density
- Low ESR with high current handling
- Very low self discharge

Applications

- Sensors
- Small mobile devices
- Small power supplies
- Mobile energy harvesting
- Uninterruptible power supply

Weblinks

[pdf data sheet](#), [html datasheet](#), [Distributor-Stock-Check](#), [Detailed request for product](#)

Technical Data

| | |
|---------------------------------|----------------------------|
| Rated Voltage | 2.5 / 5V |
| Capacity | 90 - 2400mF |
| Allowable Operation Temperature | -40°C to 70°C |
| Storage Conditions | 0°C to 60°C, max. 70% r.h. |
| RMS current | 4.5 - 8A |
| Peak Current | 30A |
| Mounting | PCB,SMT |
| Soldering Methods | Manual |

Approvals and Compliances

Detailed information on product approvals, code requirements, usage instructions and detailed test conditions can be looked up in [Details about Approvals](#)

SCHURTER products are designed for use in industrial environments. They have approvals from independent testing bodies according to national and international standards. Products with specific characteristics and requirements such as required in the automotive sector according to IATF 16949, medical technology according to ISO 13485 or in the aerospace industry can be offered exclusively with customer-specific, individual agreements by SCHURTER.

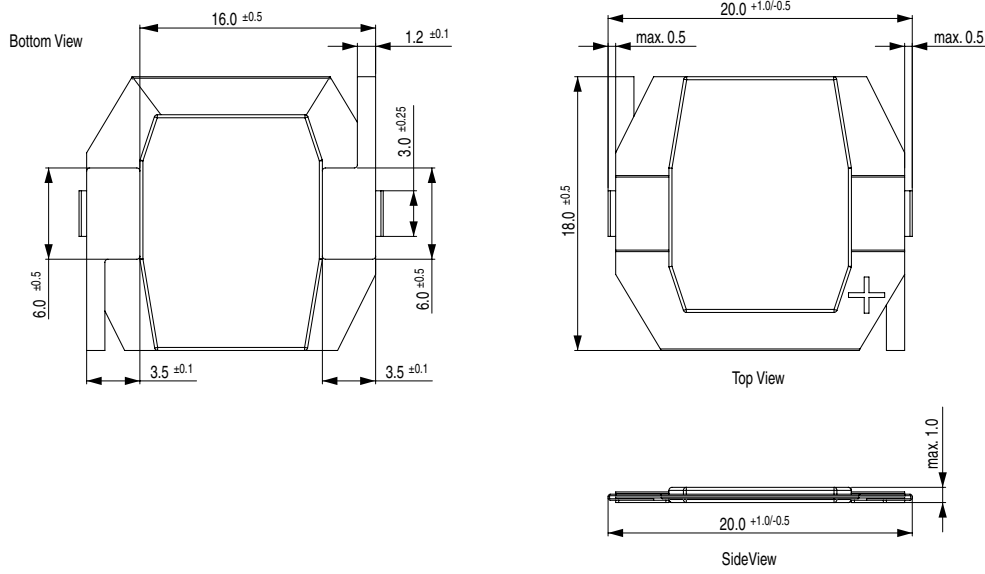
Compliances

The product complies with following Guide Lines

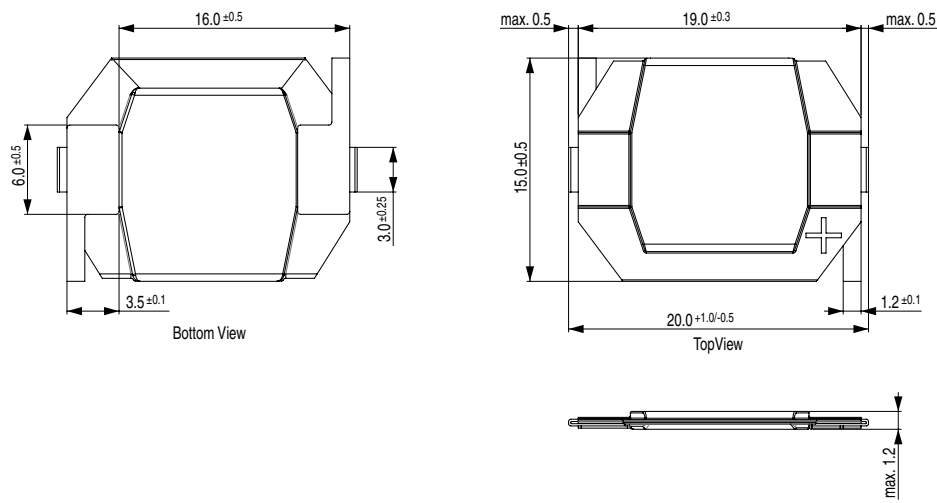
| Identification | Details | Initiator | Description |
|----------------|--|-------------|---|
| | CE declaration of conformity | SCHURTER AG | The CE marking declares that the product complies with the applicable requirements laid down in the harmonisation of Community legislation on its affixing in accordance with EU Regulation 765/2008. |
| | UKCA declaration of conformity | SCHURTER AG | The UKCA marking declares that the product complies with the applicable requirements laid down in the British Amendment of Regulation (EC) 765/2008. |
| | RoHS | SCHURTER AG | Directive RoHS 2011/65/EU, Amendment (EU) 2015/863 |
| | China RoHS | SCHURTER AG | The law SJ / T 11363-2006 (China RoHS) has been in force since 1 March 2007. It is similar to the EU directive RoHS. |
| | REACH | SCHURTER AG | On 1 June 2007, Regulation (EC) No 1907/2006 on the Registration, Evaluation, Authorization and Restriction of Chemicals 1 (abbreviated as "REACH") entered into force. |

Dimension [mm]

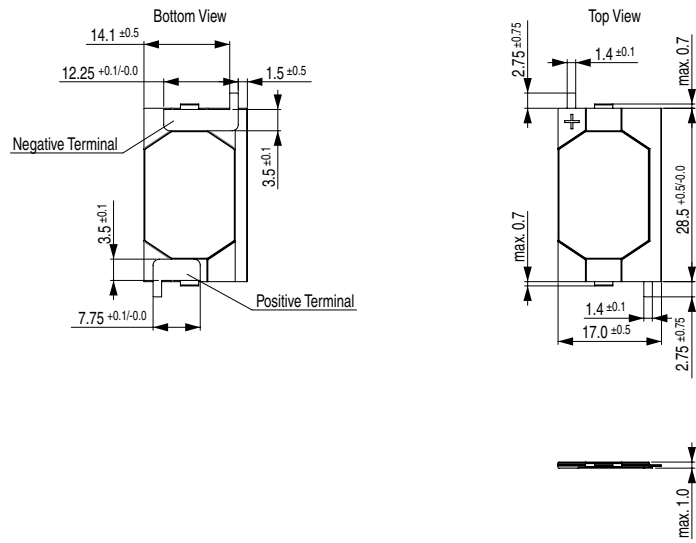
Case AS10



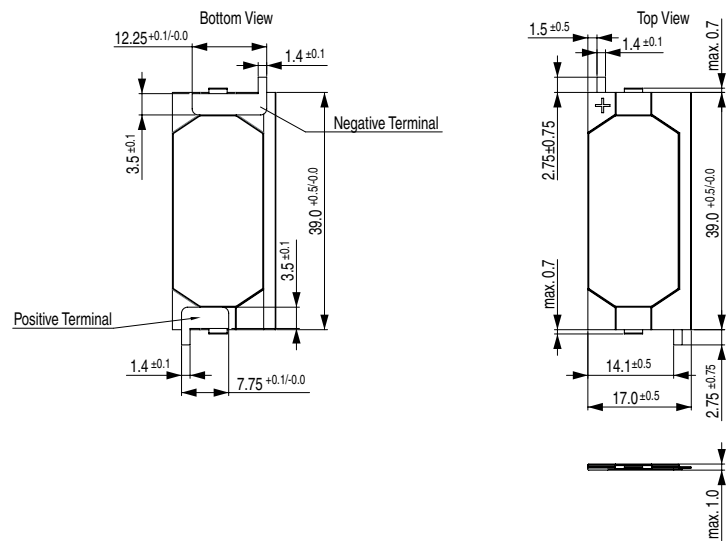
Case ZS12



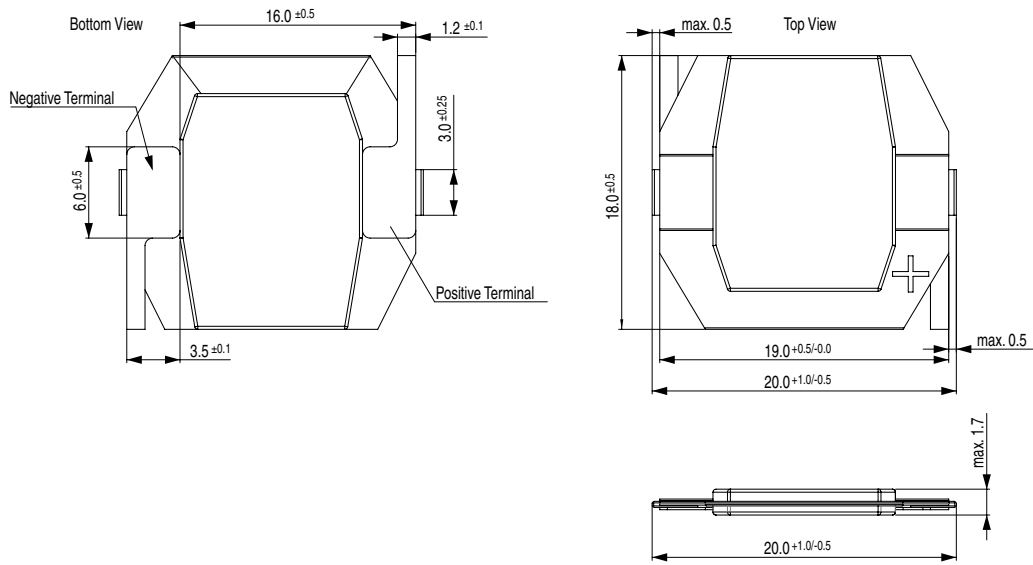
Case WS10



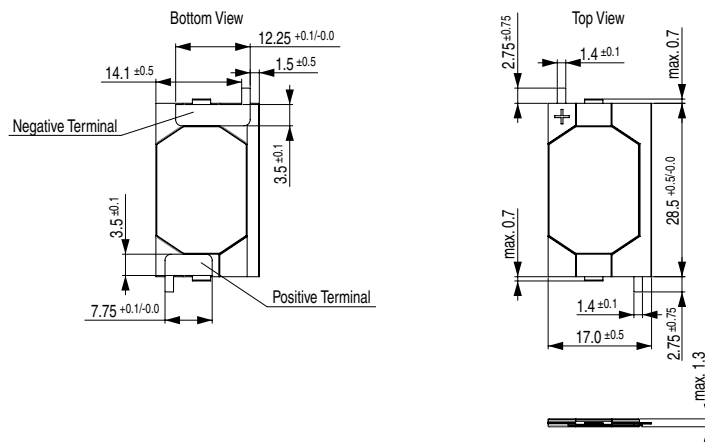
Case SS10



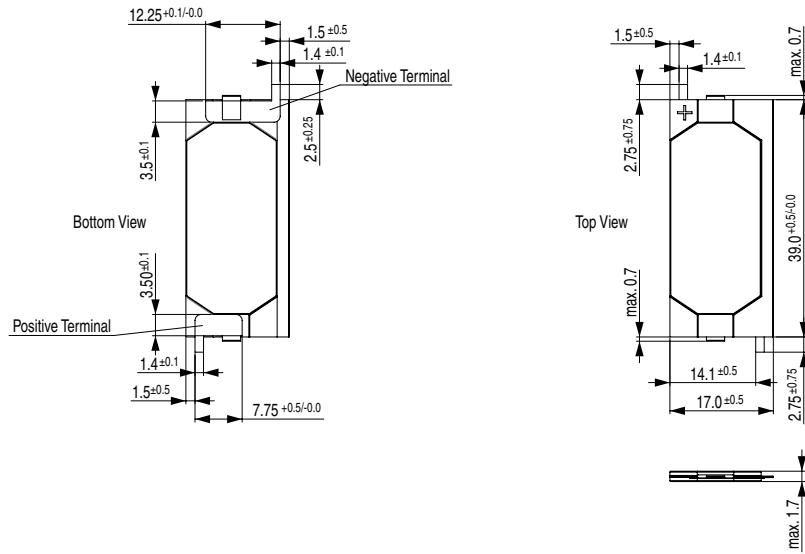
Case AS17



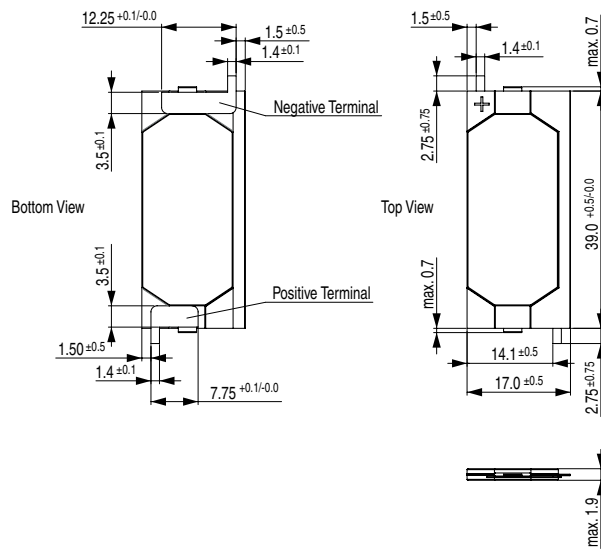
Case WS13



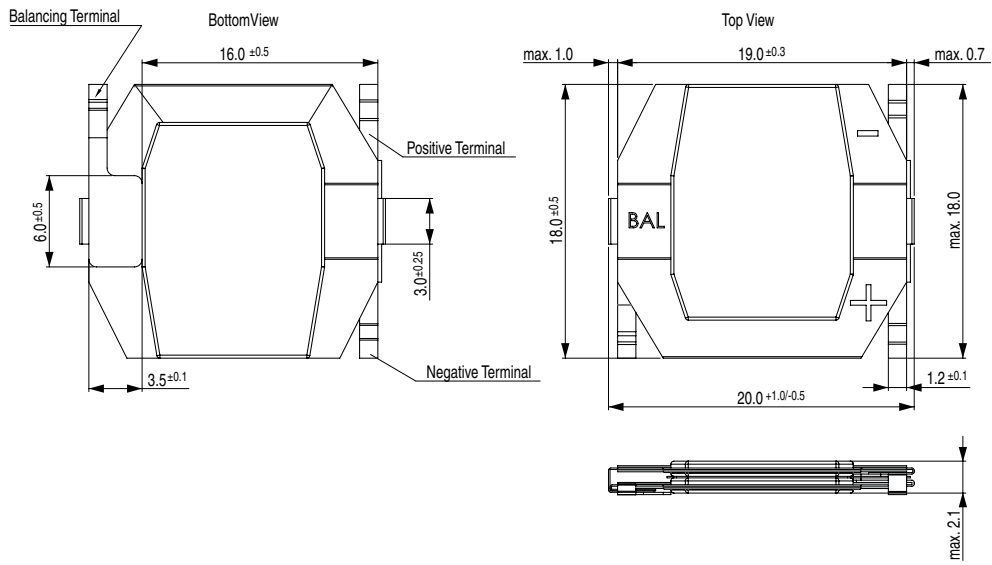
Case SS17



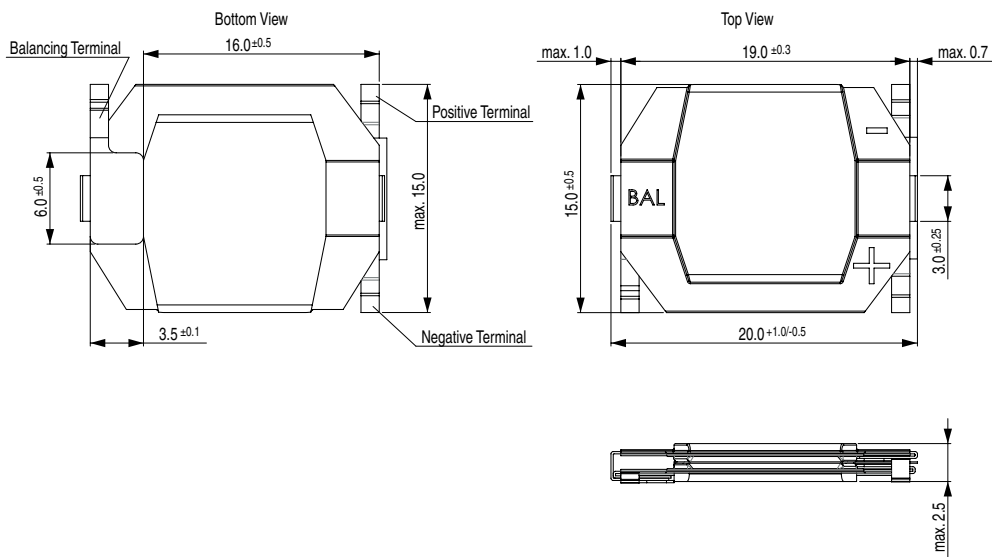
Case SS19



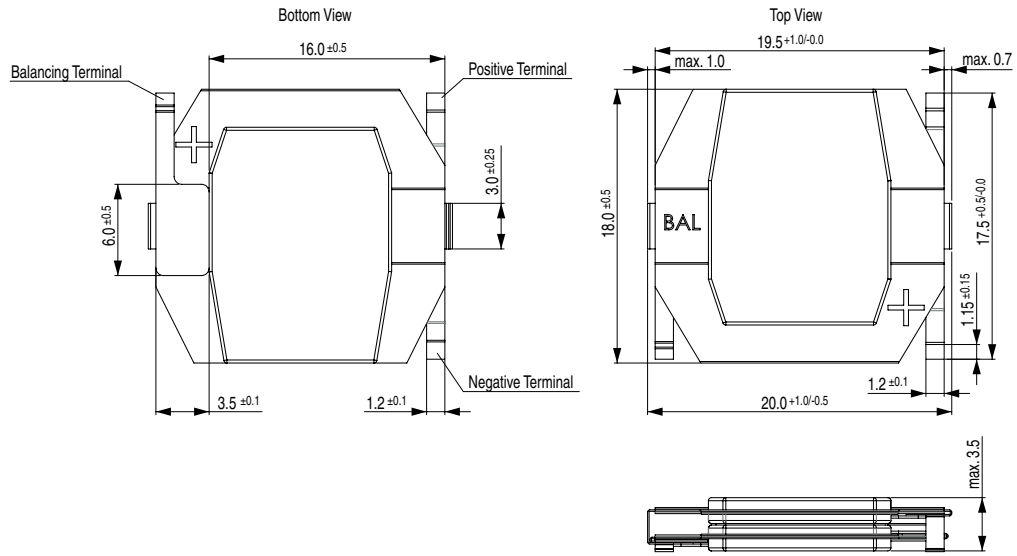
Case AS21



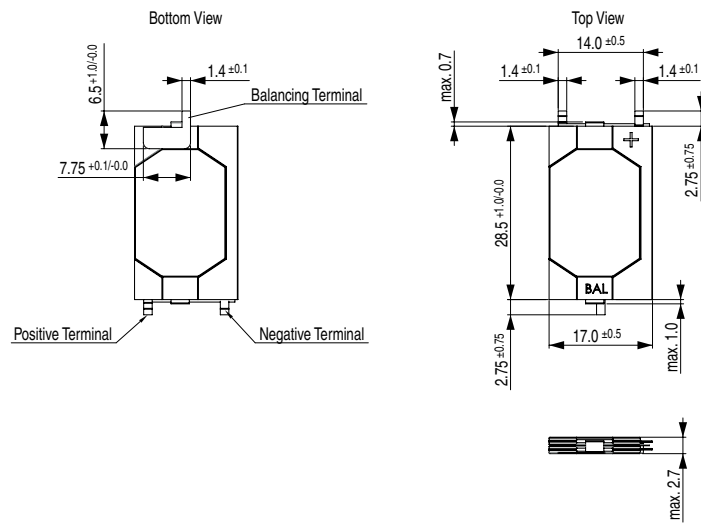
Case ZS21



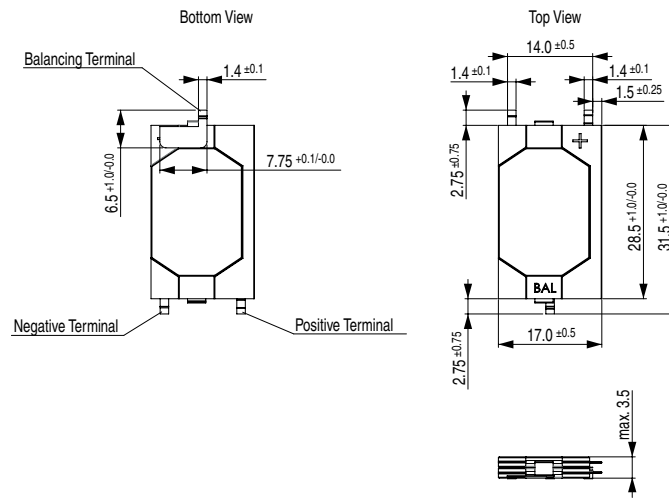
Case AS35



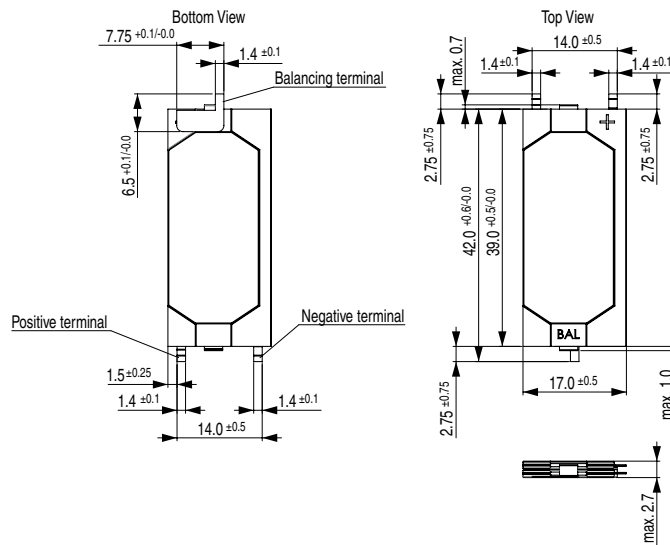
Case WS27



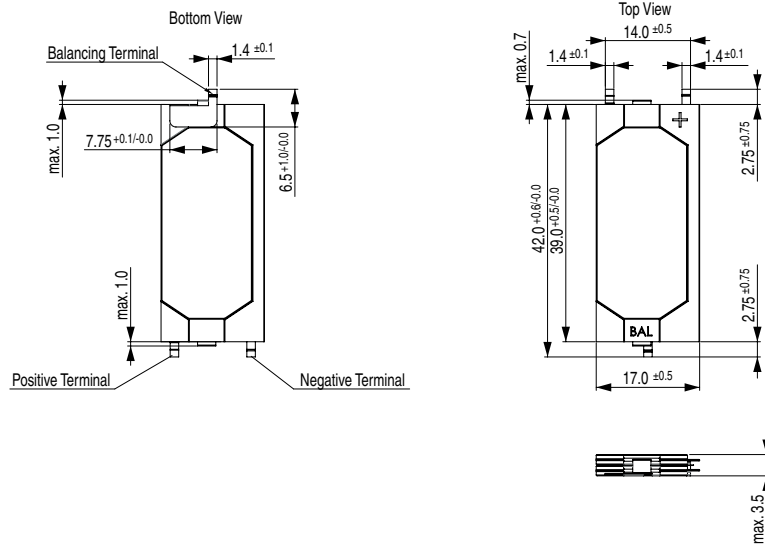
Case WS34



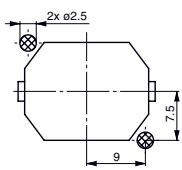
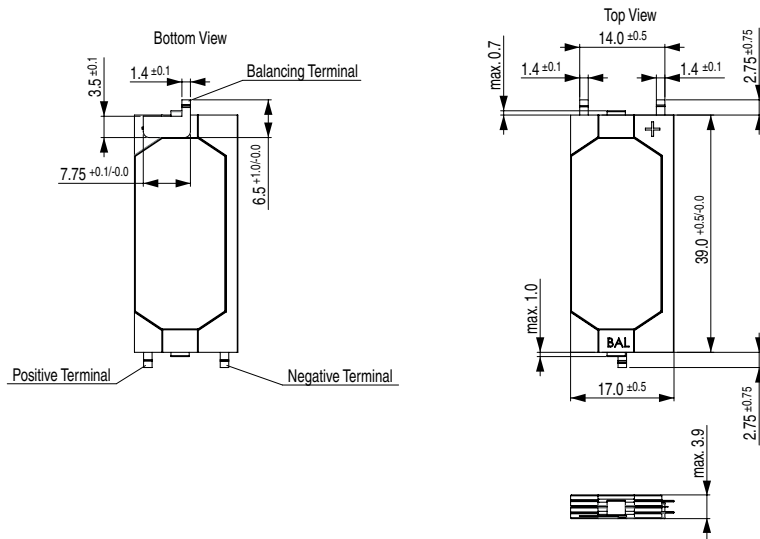
Case SS27



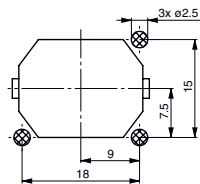
Case SS34



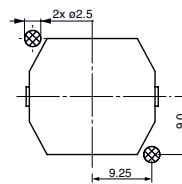
Case SS39



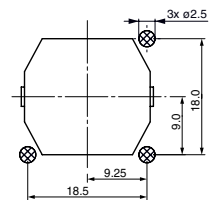
Soldering pads to Case ZS12



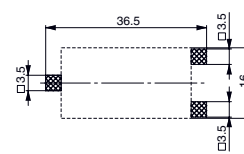
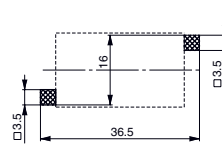
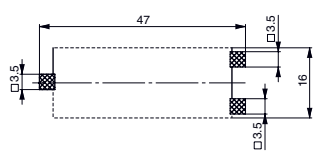
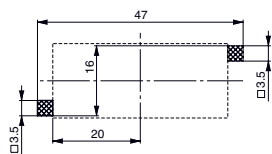
Soldering pads to Case ZS21



Soldering pads to Case AS10, AS17



Soldering pads to Case AS21, AS35



Soldering pads to Case SS10, SS13, SS17, SS19

Soldering pads to Case SS21, SS27, SS34, SS39

Soldering pads to Case WS10, WS13, WS17

Soldering pads to Case WS21, WS27, WS34

Variants

| Cell Type | Rated Voltage [V] | Capacity (DC, 23°C, ±20%) [mF] | ESR max. (AC@1kHz, 23°C) [mΩ] | Leakage Current typ. (120h, U _R , 23°C) [μA] | Leakage Current max. (120h, U _R) | RMS current (23°C) [A] | Peak Current (23°C) [A] | Housing | Order Number |
|---------------------|-------------------|--------------------------------|-------------------------------|---|--|------------------------|-------------------------|---------|--------------|
| Low ESR Single Cell | 2.5 | 170 | 50 | 1 | 2 | 4.5 | 30 | AS10 | 3-153-413 |
| Low ESR Single Cell | 2.5 | 180 | 55 | 1 | 2 | 4.5 | 30 | ZS12 | 3-153-414 |
| Low ESR Single Cell | 2.5 | 320 | 30 | 0.5 | 1 | 6 | 30 | WS10 | 3-153-415 |
| Low ESR Single Cell | 2.5 | 540 | 20 | 1 | 2 | 8 | 30 | SS10 | 3-153-416 |
| Low ESR Single Cell | 2.5 | 800 | 40 | 1 | 2 | 4.5 | 30 | AS17 | 3-153-417 |
| Low ESR Single Cell | 2.5 | 800 | 30 | 1 | 2 | 6 | 30 | WS13 | 3-153-418 |
| Low ESR Single Cell | 2.5 | 1040 | 20 | 1 | 2 | 7.5 | 30 | WS17 | 3-153-419 |
| Low ESR Single Cell | 2.5 | 1360 | 20 | 1.5 | 3 | 7.5 | 30 | SS13 | 3-153-420 |
| Low ESR Single Cell | 2.5 | 1800 | 15 | 2 | 4 | 8 | 30 | SS17 | 3-153-421 |
| Low ESR Single Cell | 2.5 | 2400 | 15 | 2.5 | 5 | 8 | 30 | SS19 | 3-153-422 |
| Low ESR Dual Cell | 5 | 90 | 95 | 1 | 2 | 4.5 | 30 | AS21 | 3-153-423 |
| Low ESR Dual Cell | 5 | 90 | 110 | 1 | 2 | 4.5 | 30 | ZS21 | 3-153-424 |
| Low ESR Dual Cell | 5 | 160 | 55 | 0.5 | 1 | 6 | 30 | WS21 | 3-153-425 |
| Low ESR Dual Cell | 5 | 270 | 35 | 1 | 2 | 8 | 30 | SS21 | 3-153-426 |
| Low ESR Dual Cell | 5 | 400 | 75 | 1 | 2 | 4.5 | 30 | AS35 | 3-153-427 |
| Low ESR Dual Cell | 5 | 400 | 55 | 1 | 2 | 6 | 30 | WS27 | 3-153-428 |
| Low ESR Dual Cell | 5 | 520 | 40 | 1 | 2 | 7.5 | 30 | WS34 | 3-153-429 |
| Low ESR Dual Cell | 5 | 680 | 35 | 1.5 | 3 | 7.5 | 30 | SS27 | 3-153-430 |
| Low ESR Dual Cell | 5 | 900 | 25 | 2 | 4 | 8 | 30 | SS34 | 3-153-431 |
| Low ESR Dual Cell | 5 | 1200 | 25 | 2.5 | 5 | 8 | 30 | SS39 | 3-153-432 |

Availability for all products can be searched real-time: <https://www.schurter.com/en/info-center/support-tools/stock-check-distributors>

Packaging Unit

100 Pcs