

IEC Appliance Inlet C22 for hot Conditions, with Filter for high Temperatures, front side Mounting



See below:
[Approvals and Compliances](#)

Description

- Panel mount :
Screw-on from front side
- 2 Functions :
Appliance Inlet Protection class I , Line filter in standard and medical version
- Solder / quick connect / wires (stranded)

Unique Selling Proposition

- For higher temperatures
- Attractive flat front design
- Highly resistant since fully potted
- Various filter variants

Characteristics

- Compact design with optimal shielding
Suitable for high ambient temperatures up to 75°C
- Version with class X1 and X2 (standard version) capacitors
- Universal line filter for standard applications
- Suitable for use in medical equipment according to IEC/UL 60601-1 (1 MOOP, 1 MOPP)
For applications according IEC/UL 62368-1 we recommend variants with bleed resistor

Other versions on request

- flexible wire with various lengths

References

Alternative: version without line filter [1681](#)

Weblinks

[pdf data sheet](#), [html datasheet](#), [General Product Information](#), [Approvals](#), [Distributor-Stock-Check](#), [Accessories](#), [Detailed request for product](#)

Technical Data

Ratings IEC	16A @ Ta 75 °C / 250 VAC; 50Hz
Ratings UL/CSA	20A @ Ta 65 °C / 250 VAC; 60Hz
Leakage Current	standard < 0.5 mA (250 V / 60Hz) medical < 5 µA (250 V / 60 Hz)
Dielectric Strength	> 1.7 kVDC between L-N (Cy2) > 2.7 kVDC between L/N-PE (Cy2) Test voltage (2 sec)
Impulse Withstand Voltage	> 2.5 kV between L-N (CX2) > 4 kV between L-N (CX1) > 5 kV between L/N-PE (Cy2) voltage (1.2/50 µs)
Allowable Operation Temperature	-25 °C to 100 °C
Climatic Category	25/100/21 acc. to IEC 60068-1
IP-Protection	front side IP40 acc. to IEC 60529
Protection Class	Suitable for appliances with protection class I acc. to IEC 61140
Terminal	Solder / quick connect / wires (stranded)
Panel Thickness S	Screw: max 8 mm Mounting screw torque max 0.5 Nm
Material	Thermoplastic, black, UL 94V-0

Appliance inlet/-outlet	C22 acc. to IEC 60320-1, UL 498, CSA C22.2 no. 42 (for hot conditions) pin-temperature 155 °C, 16A, Protection Class I
Line Filter	Standard and Medical Version, IEC 60939, UL 1283, CSA C22.2 no. 8 Technical Details
MTBF	> 1'400'000 h acc. to MIL-HB-217 F

Approvals and Compliances



Detailed information on product approvals, code requirements, usage instructions and detailed test conditions can be looked up in [Details about Approvals](#)

SCHURTER products are designed for use in industrial environments. They have approvals from independent testing bodies according to national and international standards. Products with specific characteristics and requirements such as required in the automotive sector according to IATF 16949, medical technology according to ISO 13485 or in the aerospace industry can be offered exclusively with customer-specific, individual agreements by SCHURTER.

Approvals








The approval mark is used by the testing authorities to certify compliance with the safety requirements placed on electronic products.

Approval Reference Type: C22F

Approval Logo	Certificates	Certification Body	Description
	VDE Approvals	VDE	Certificate Number: 104884
	UL Approvals	UL	UR File Number: E72928



Product standards

Product standards that are referenced

Organization	Design	Standard	Description
	Designed according to	IEC 60320-1	Appliance couplers for household and similar general purposes
	Designed according to	IEC 60939	Passive filters for suppressing electromagnetic interference
	Designed according to	IEC 61058-1	Switches for appliances. Part 1. General requirements
	Designed according to	UL 498	Standard for Attachment Plugs and Receptacles
	Designed according to	UL 1283	Passive filters for suppressing electromagnetic interference
	Designed according to	CSA C22.2 no. 42	General Use Receptacles, Attachment Plugs, and Similar Wiring Devices
	Designed according to	CSA C22.2 no. 8	Electromagnetic interference (EMI) filters







Application standards

Application standards where the product can be used

Organization	Design	Standard	Description
	Suitable for applications acc.	IEC/UL 62368-1	Audio/video, information and communication technology equipment - Part 1: Safety requirements
	Suitable for applications acc.	IEC 60601-1	Medical electrical equipment - Part 1: General requirements for basic safety and essential performance

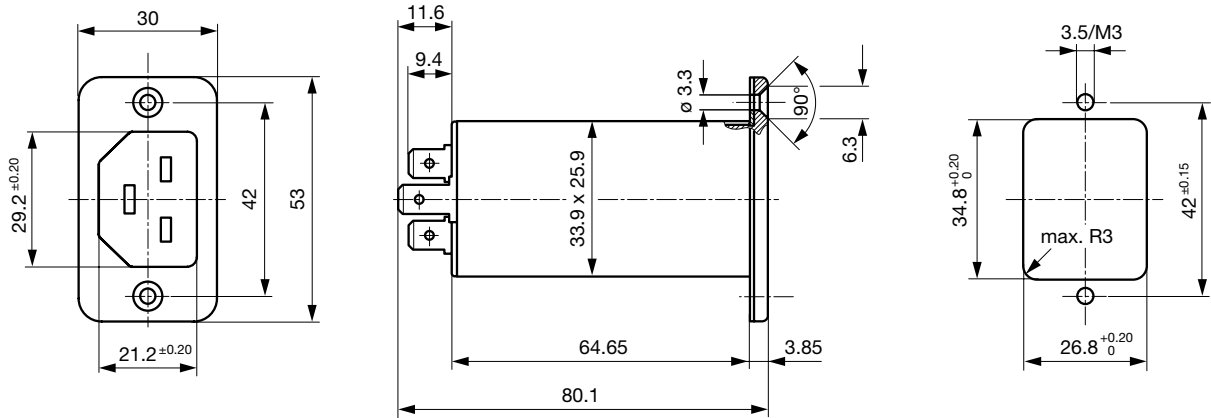
Compliances

The product complies with following Guide Lines

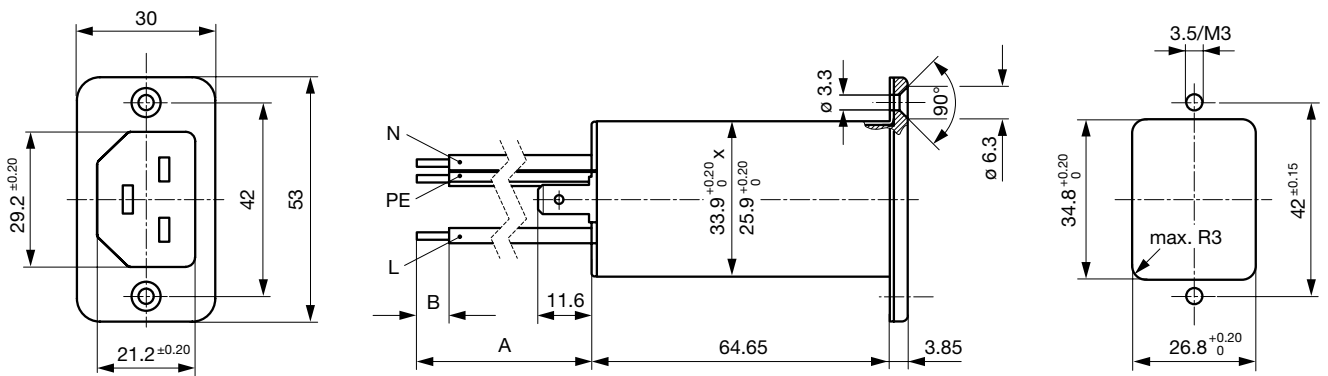
Identification	Details	Initiator	Description
	CE declaration of conformity	SCHURTER AG	The CE marking declares that the product complies with the applicable requirements laid down in the harmonisation of Community legislation on its affixing in accordance with EU Regulation 765/2008.
	UKCA declaration of conformity	SCHURTER AG	The UKCA marking declares that the product complies with the applicable requirements laid down in the British Amendment of Regulation (EC) 765/2008.
	RoHS	SCHURTER AG	Directive RoHS 2011/65/EU, Amendment (EU) 2015/863
	China RoHS	SCHURTER AG	The law SJ / T 11363-2006 (China RoHS) has been in force since 1 March 2007. It is similar to the EU directive RoHS.
	REACH	SCHURTER AG	On 1 June 2007, Regulation (EC) No 1907/2006 on the Registration, Evaluation, Authorization and Restriction of Chemicals 1 (abbreviated as "REACH") entered into force.
	Medical Equipment	SCHURTER AG	Suitable for use in medical equipment according to IEC/UL 60601-1 (1 MOOP, 1 MOPP)

Dimension [mm]

Screw-on mounting with quick connect terminals



Screw-on mounting with wire leads

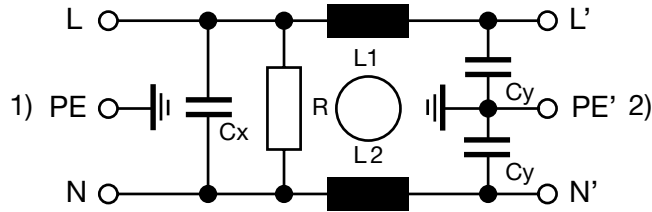


Technical Data of Filter-Components

Rated Current [A]	Filter-Type	Inductances L [mH]	Capacitance CX [nF]	Capacitance CY [nF]	R [MΩ]
16	Standard version	2 x 0.6	100	2.2	1
16	Standard version	2 x 0.6	330	2.2	1
20	Standard version	2 x 0.3	100	2.2	1
20	Standard version	2 x 0.3	330	2.2	1
16	Medical Version (M5)	2 x 0.6	100	-	1
20	Medical Version (M5)	2 x 0.3	100	-	1
20	Medical Version (M5)	2 x 0.3	330	-	1
16	Medical Version (M80)	2 x 0.6	100	0.47	1
20	Medical Version (M80)	2 x 0.3	100	0.47	1

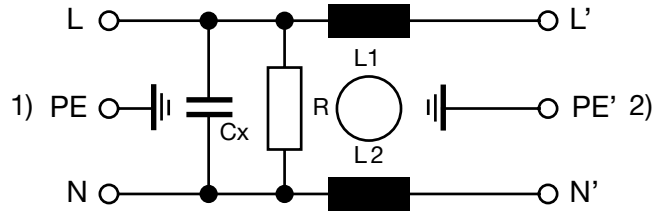
Diagrams

Standard version



1) Line
2) Load

Medical Version (M5)



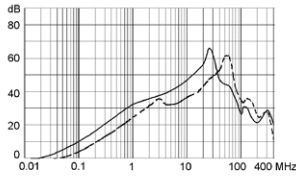
1) Line
2) Load

Attenuation Loss

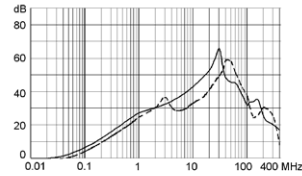
--- 50Ω differential mode ____ 50Ω common mode

Standard version

16 A

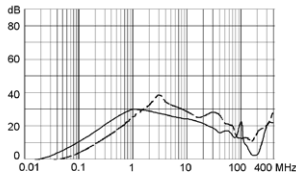


20 A

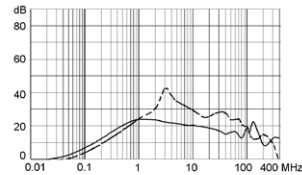


Medical version (M5)

16 A

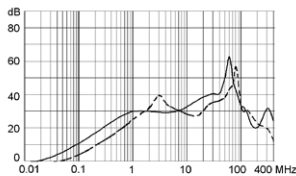


20 A

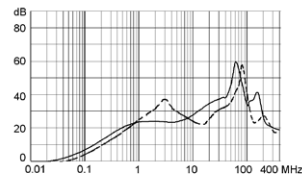


Medical version (M80)

16 A



20 A



Variants

Rated Current IEC [A]	Rated Current UL [A]	Filter-Type	Panel mounting	Mounting side	Terminal	Capacitor	V-Lock	Order Number
16	16	Standard version	Screw	Front Side	Quick connect terminals 6.3 x 0.8 mm	X2 330nF		C22F.1107
16	20	Standard version	Screw	Front Side	Quick connect terminals 6.3 x 0.8 mm	X2 100nF		C22F.0101
16	16	Standard version	Screw	Front Side	Quick connect terminals 6.3 x 0.8 mm	X2 100nF		C22F.1101
16	20	Standard version	Screw	Front Side	Quick connect terminals 6.3 x 0.8 mm	X1 100nF		C22F.0103
16	20	Standard version	Screw	Front Side	Solder terminal	X2 330nF		C22F.0007

Rated Current IEC [A]	Rated Current UL [A]	Filter-Type	Panel mounting	Mounting side	Terminal	Capacitor	V-Lock	Order Number
16	20	Standard version	Screw	Front Side	Solder terminal	X2 100nF		C22F.0001
16	16	Standard version	Screw	Front Side	Solder terminal	X2 100nF		C22F.1001
16	20	Standard version	Screw	Front Side	Solder terminal	X1 100nF		C22F.0003
16	20	Medical Version (M5)	Screw	Front Side	Quick connect terminals 6.3 x 0.8 mm	X2 100nF		C22F.0102
16	16	Medical Version (M5)	Screw	Front Side	Quick connect terminals 6.3 x 0.8 mm	X2 100nF		C22F.1102
16	20	Medical Version (M5)	Screw	Front Side	Solder terminal	X2 330nF		C22F.0008
16	20	Medical Version (M5)	Screw	Front Side	Solder terminal	X2 100nF		C22F.0002
16	16	Medical Version (M5)	Screw	Front Side	Solder terminal	X2 100nF		C22F.1002
16	16	Medical Version (M80)	Screw	Front Side	Solder terminal	X2 100nF		C22F.1005

Availability for all products can be searched real-time: <https://www.schurter.com/en/info-center/support-tools/stock-check-distributors>

Packaging unit

20 Pcs

Accessories

Description



Wire_Harness

Wire harness for SCHURTER products



RC320

Rear Cover for Power Entry Module

Mating Outlets/Connectors

Category / Description



Connector Overview complete

1658, Mounting: Power Cord, Screw clamps Connector: IEC C21

1658.0000



Power Supply Cord Overview complete

Cord Sets 16 A, Europlug, 2.5 m, Connector IEC C21, H05VV-F3G1.5, black

6051.5001