

IO-Link Communication



MSS-IO

See below:

Approvals and Compliances

Description

- IO-Link Communication protocol
- Resistive electronic switch (LA) / pushbutton (MO) without moving parts
- Triggering of the switching mechanism by light pressure on the switching surface
- Multicolor illumination

Unique Selling Proposition

- Hygienic operation
- Trendy design

Characteristics

- Insensitive to water
- Side illumination
- Wearless - no moving parts

Weblinks

[pdf data sheet](#), [html datasheet](#), [General Product Information](#), [CAD-Drawings](#), [Product News](#), [Detailed request for product](#)

Technical Data

Electrical Data

Switching Function	momentary (MO) or latching (LA)
Supply Voltage	24 VDC
Output	adjustable
Contact Configuration	PNP/NPN/Push-Pull/NO/NC
Lifetime	>20 million actuations

Mechanical Data

Actuation Type	Resistive
Actuating Force	1 - 3 N
Shock Protection	IK06
Mounting Depth	28.9 mm
Connector	M12
Tightening Torque Plastic Nut	2.5 Nm

Climatical Data

Operating Temperature	-40 to 85 °C
Storage Temperature	-40 to 85 °C
IP Protection Class Front Side	IP67 / IP69K acc. to IEC 60529
Salt Spray Test (acc. to IEC 60068-2-11)	96 h Residence Time

Material

Housing	PMMA
Actuator	Stainless Steel
Illuminated ring	PMMA
Rear cover	PC
Mounting Nut	PBT GF30

MSS-IO Link

[MSS-IO Link IODD-Finder](#)

General characteristics

Communication interface		IO-Link specification V1.1.3
Transmission rate	[kBaud]	38.4 (COM2)
Cycle time	[ms]	≥4
SIO Mode		Yes

Approvals and Compliances

Detailed information on product approvals, code requirements, usage instructions and detailed test conditions can be looked up in [Details about Approvals](#)

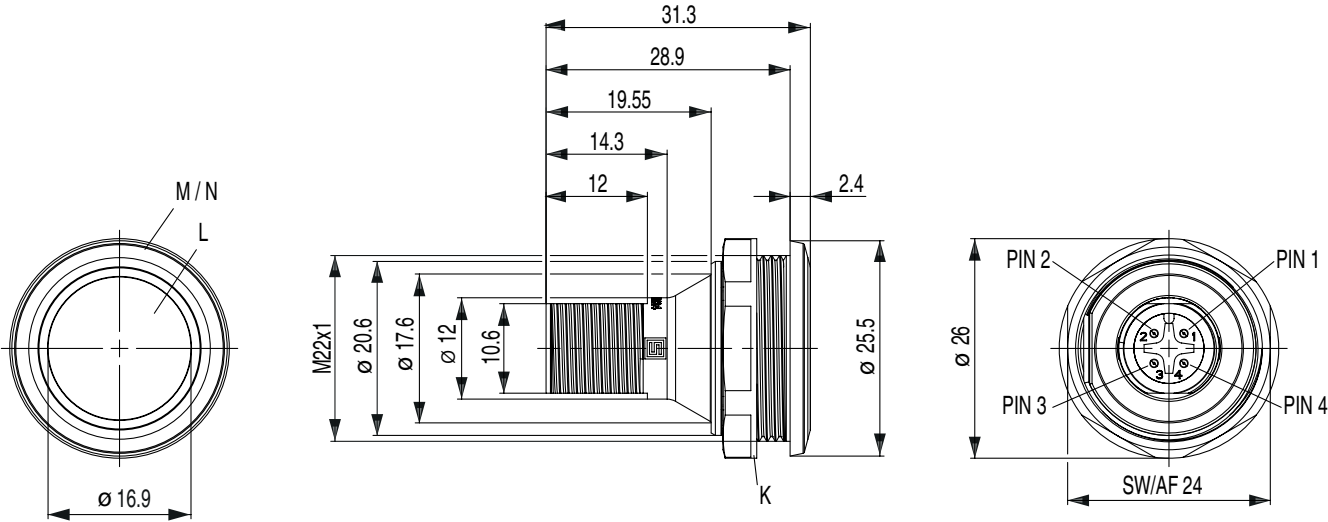
SCHURTER products are designed for use in industrial environments. They have approvals from independent testing bodies according to national and international standards. Products with specific characteristics and requirements such as required in the automotive sector according to IATF 16949, medical technology according to ISO 13485 or in the aerospace industry can be offered exclusively with customer-specific, individual agreements by SCHURTER.

Compliances

The product complies with following Guide Lines

Identification	Details	Initiator	Description
CE	CE declaration of conformity	SCHURTER AG	The CE marking declares that the product complies with the applicable requirements laid down in the harmonisation of Community legislation on its affixing in accordance with EU Regulation 765/2008.
UK CA	UKCA declaration of conformity	SCHURTER AG	The UKCA marking declares that the product complies with the applicable requirements laid down in the British Amendment of Regulation (EC) 765/2008.
RoHS COMPLIANT	RoHS	SCHURTER AG	Directive RoHS 2011/65/EU, Amendment (EU) 2015/863
REACH	REACH	SCHURTER AG	On 1 June 2007, Regulation (EC) No 1907/2006 on the Registration, Evaluation, Authorization and Restriction of Chemicals 1 (abbreviated as "REACH") entered into force.

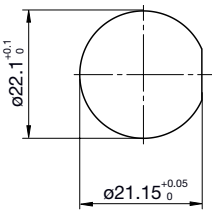
Dimension [mm]



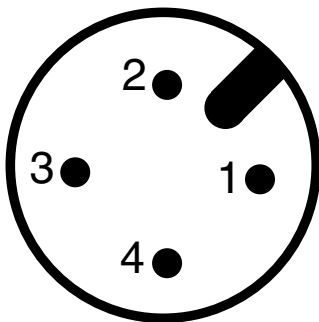
- K: Nut (Plastic)
- L: Actuator (Stainless steel)
- M: Lightguide (Plastic)
- N: Bezel (Plastic)

Dimension

MSS22 Mounting hole



Diagrams



M12-4

Connection assignment	
PIN-number	M12 Connector
1	brown; L+
2	white; NC
3	(light) blue; L-
4	black; C/Q

Variants

Diameter [mm]	Rated Current [A]	Illumination type	Illumination color	Colour of Housing	Switching Function	Suitable cable	Order Number
22	-	Lateral illumination	RGB	translucent	-	-	3-150-067

Availability for all products can be searched real-time: <https://www.schurter.com/en/info-center/support-tools/stock-check-distributors>

Packaging unit	1 Pcs
----------------	-------